

A red crayon is shown at the top left, angled downwards. A red squiggly line extends from its tip towards the center of the page.

# Assessment Results

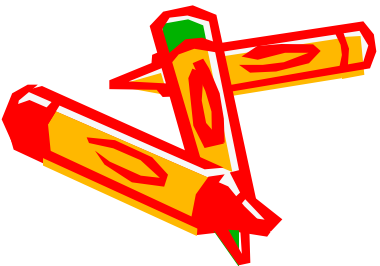
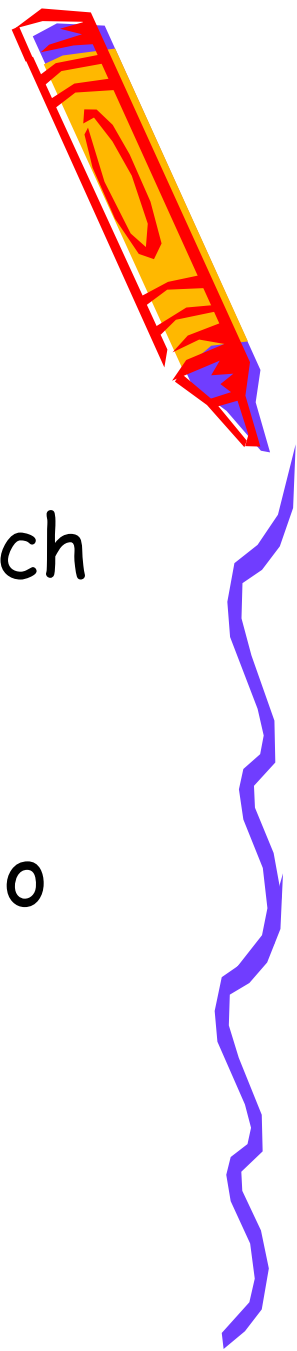
Spring 2011

A blue squiggly line starts from the bottom left and extends towards the right. At the end of the line is a yellow and blue crayon, angled upwards and to the right.

Spring 2011

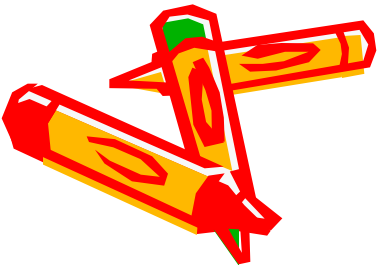
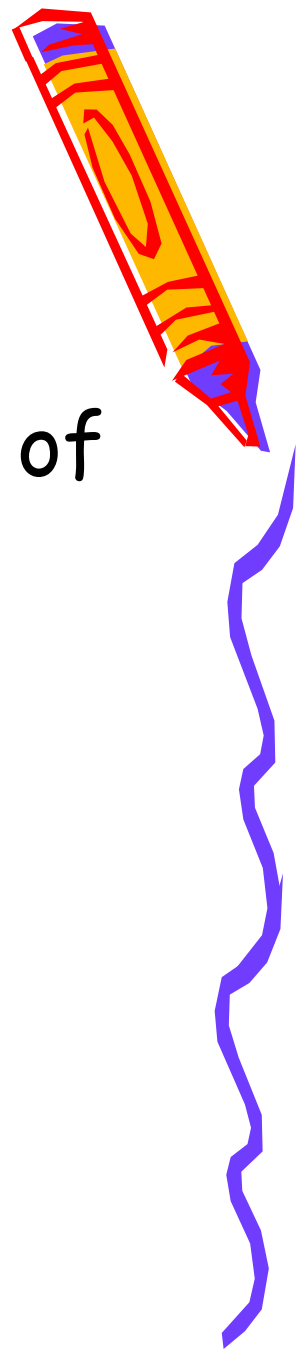
# 2011 State Test Results

- The following slides demonstrate levels of student proficiency at each grade level in Language Arts, Mathematics and Science
- The slides includes all students who took the spring 2011 state tests



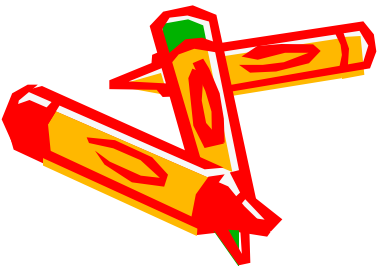
Each chart includes the percentage of students who are:

- Partially Proficient
- Proficient
- Advanced Proficient

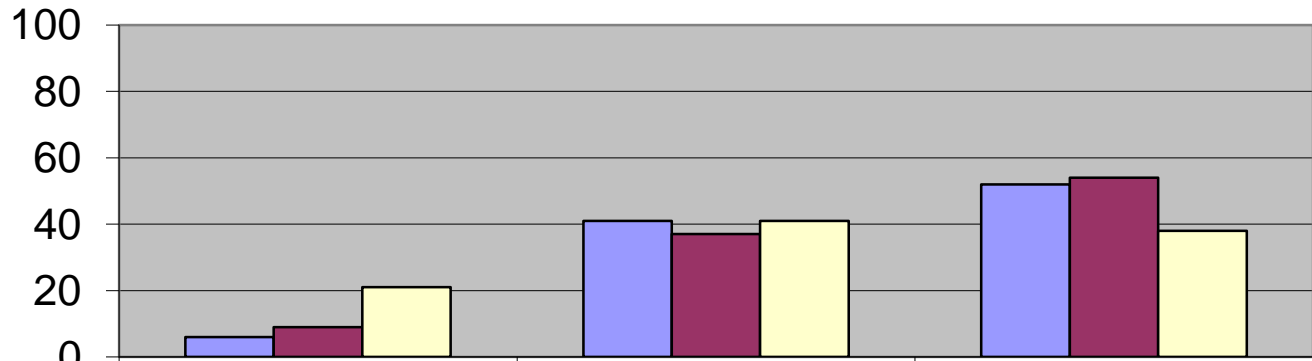




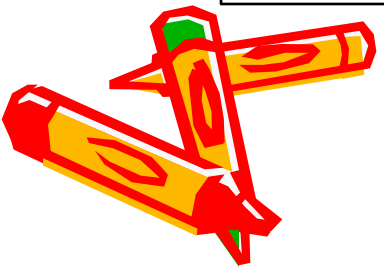
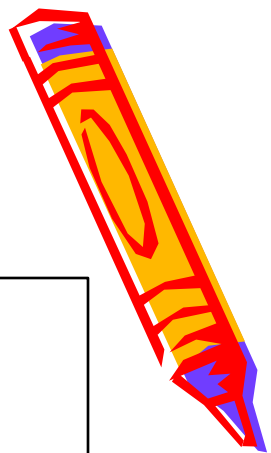
- The **blue** bar shows the achievement of Holmdel students
- The **red** bar shows the achievement of students in our District Factor Group
- The **white** bar shows the achievement of students throughout New Jersey

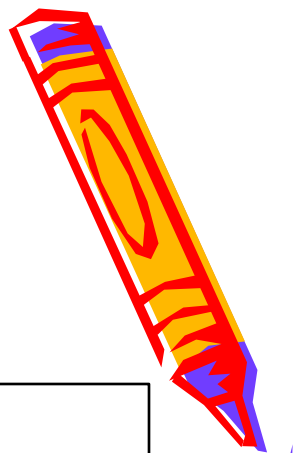


# Mathmatics Grade 3

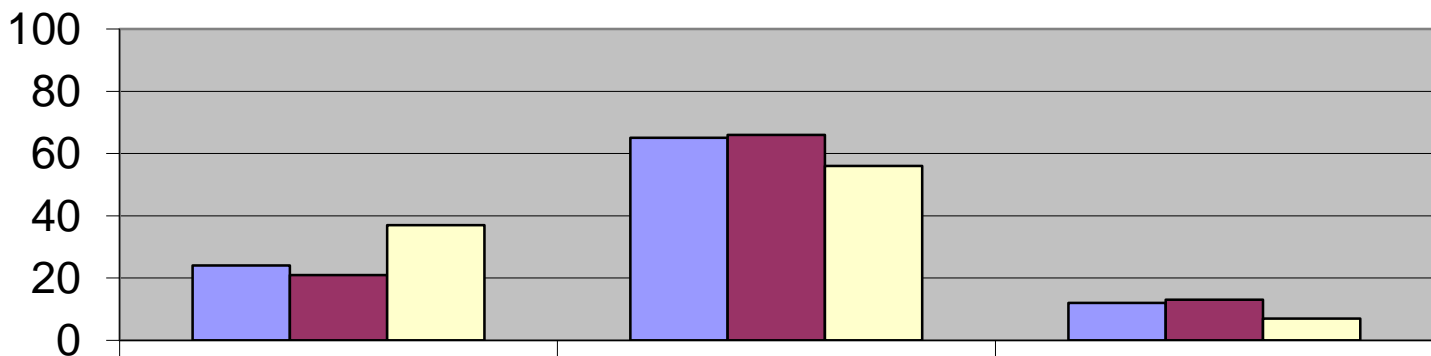


	% Partially Proficient	% Proficient	% Advanced Proficient
Holmdel	6	41	52
DFG I	9	37	54
State	21	41	38

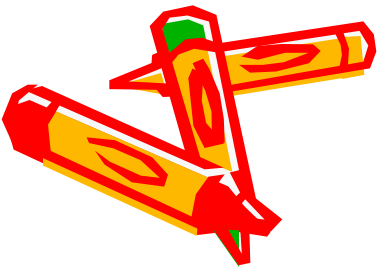


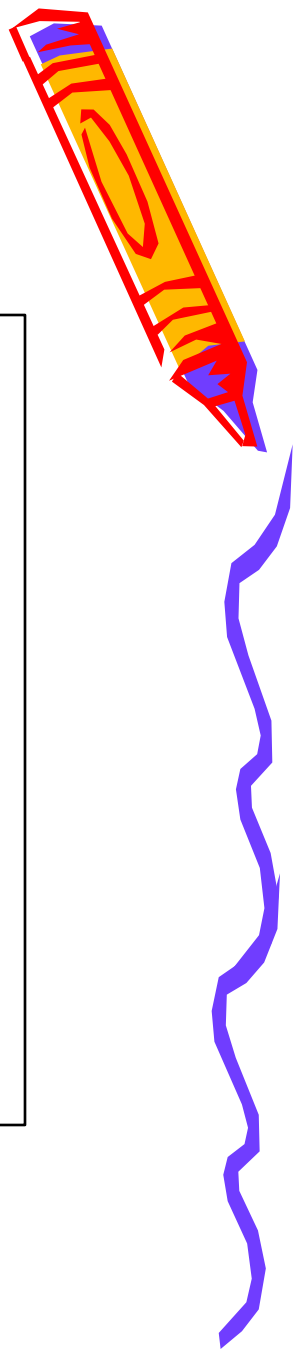


### Language Arts Grade 3

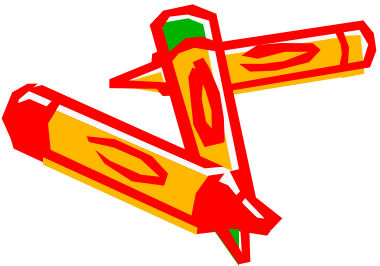
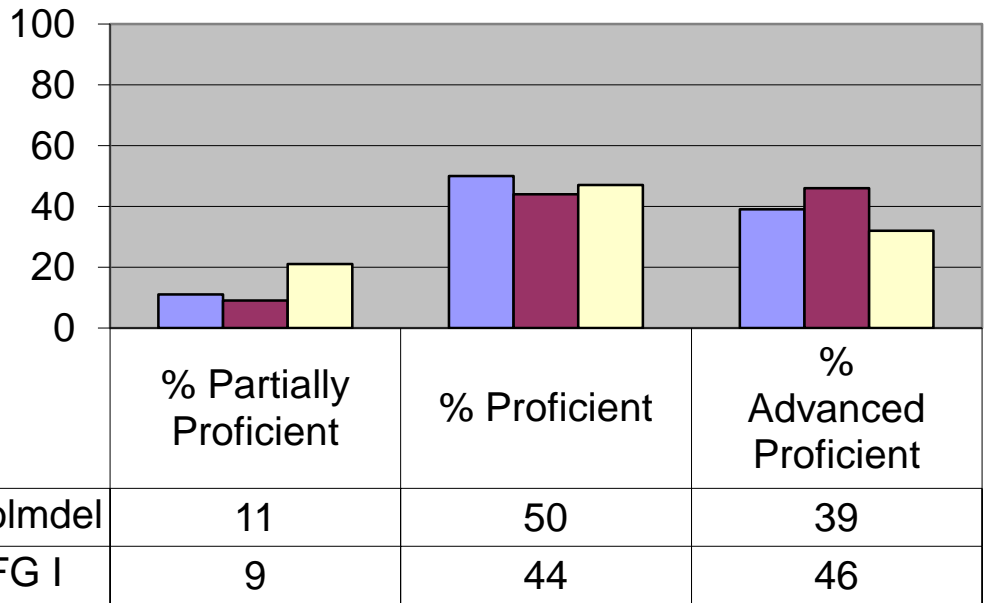


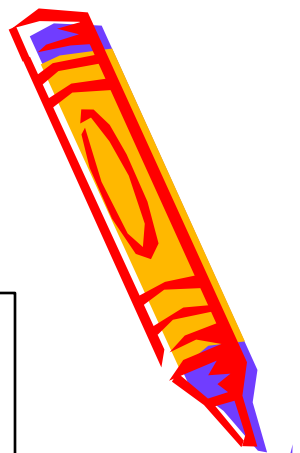
	% Partially Proficient	% Proficient	% Advanced Proficient
Holmdel	24	65	12
DFG I	21	66	13



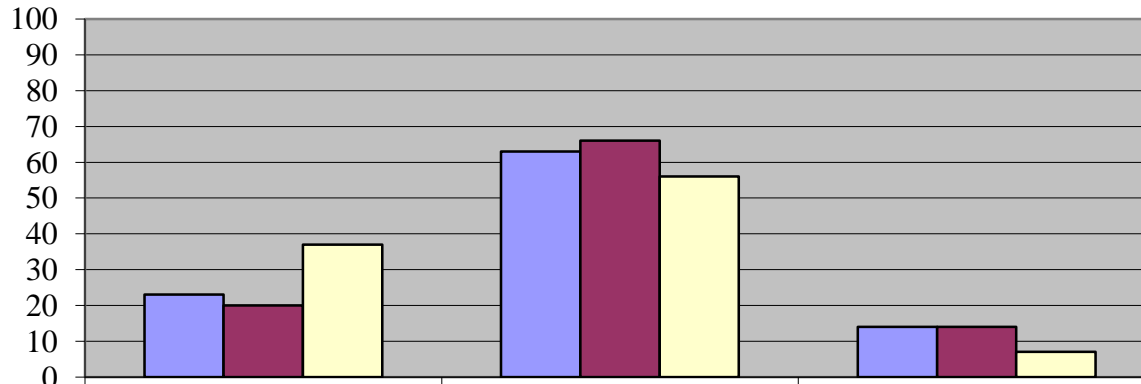


## Mathematics Grade 4



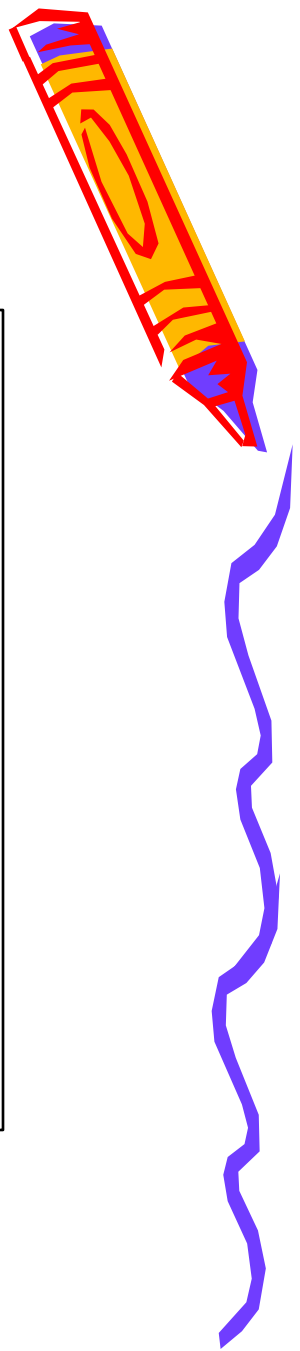


## Language Arts Grade 4

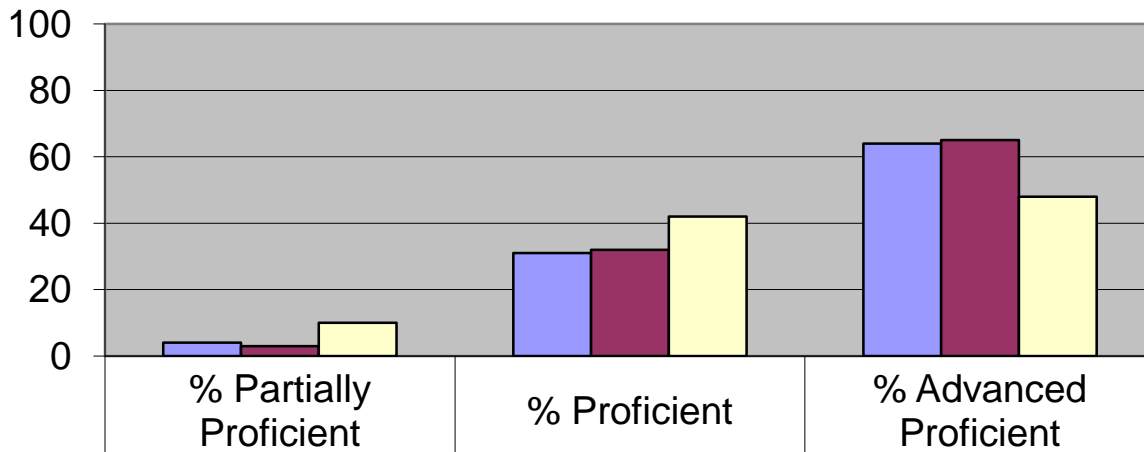


	% Partially Proficient	% Proficient	% Advanced Proficient
■ Holmdel	23	63	14
■ DFG I	20	66	14
■ State	37	56	7

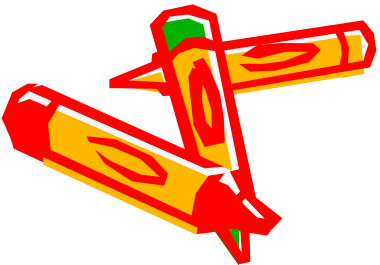


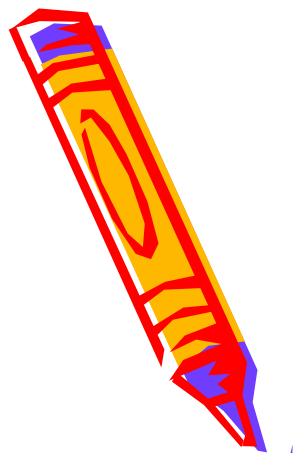


## Science Grade 4

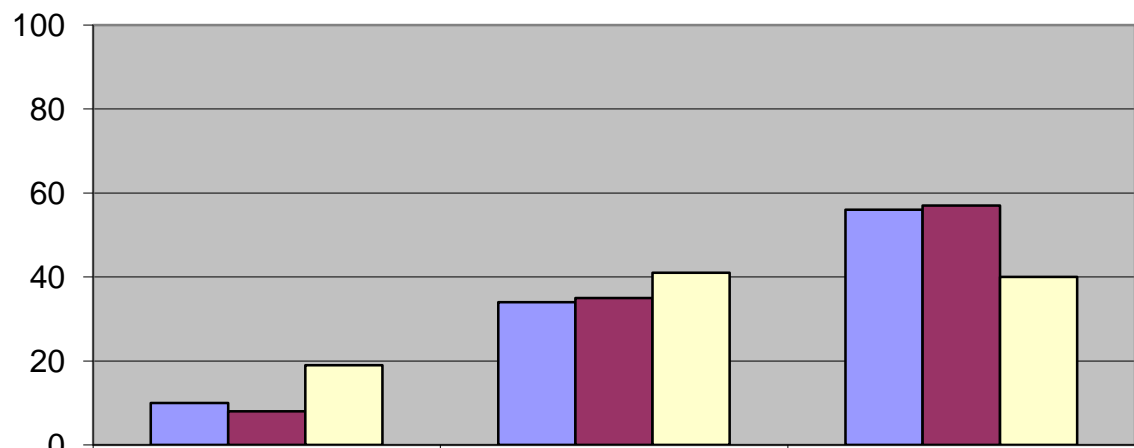


■ Holmdel	4	31	64
■ DFG I	3	32	65
■ State	10	42	48

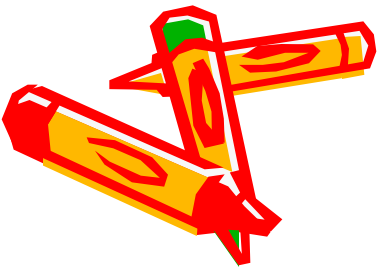


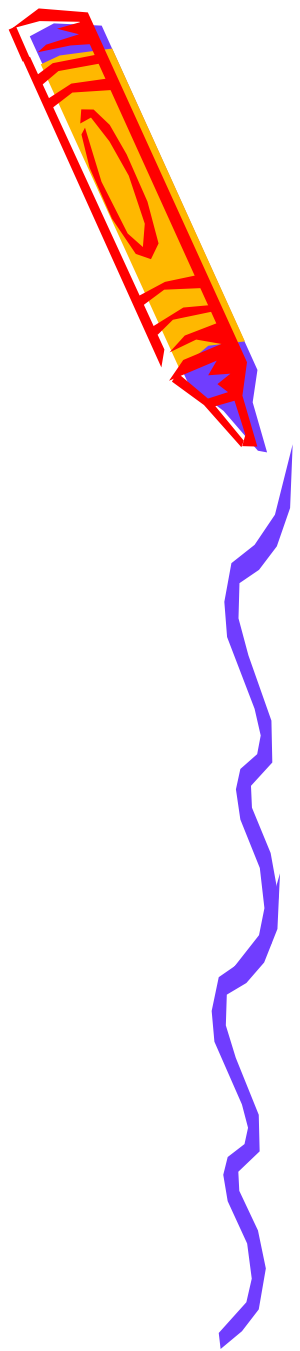


### Mathematics Grade 5

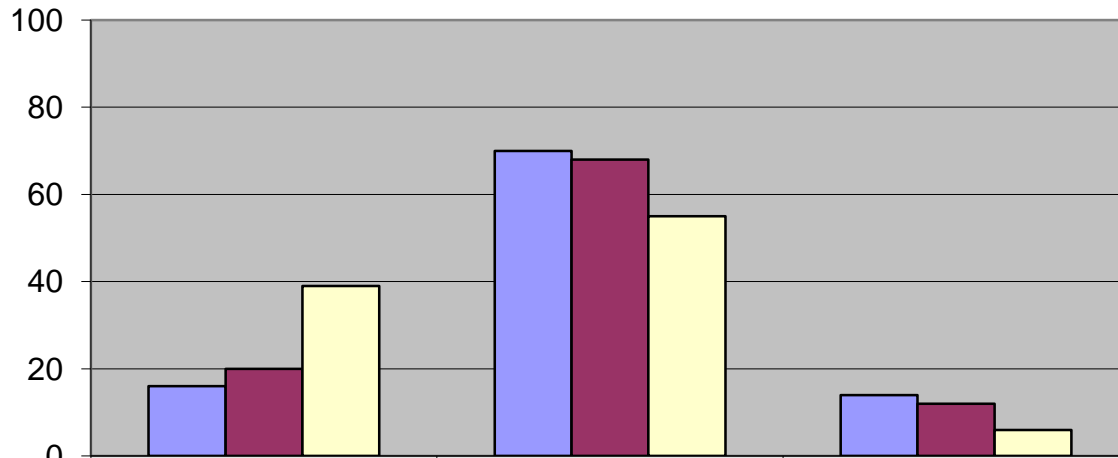


	% Partially Proficient	% Proficient	% Advanced Proficient
Holmdel	10	34	56
DFG I	8	35	57
State	19	41	40

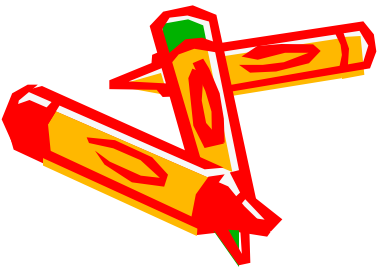


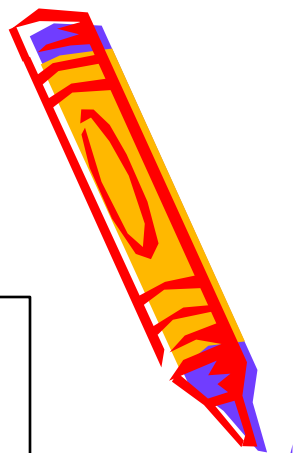


## Language Arts Grade 5

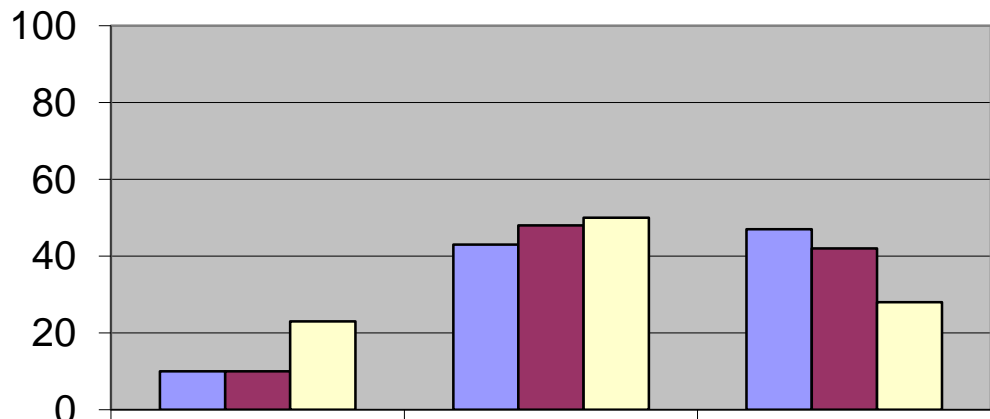


	% Partially Proficient	% Proficient	% Advanced Proficient
Holmdel	16	70	14
DFG I	20	68	12
State	39	55	6

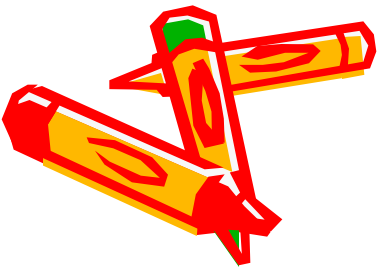


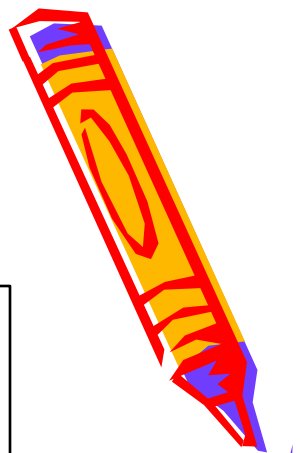


## Mathematics Grade 6

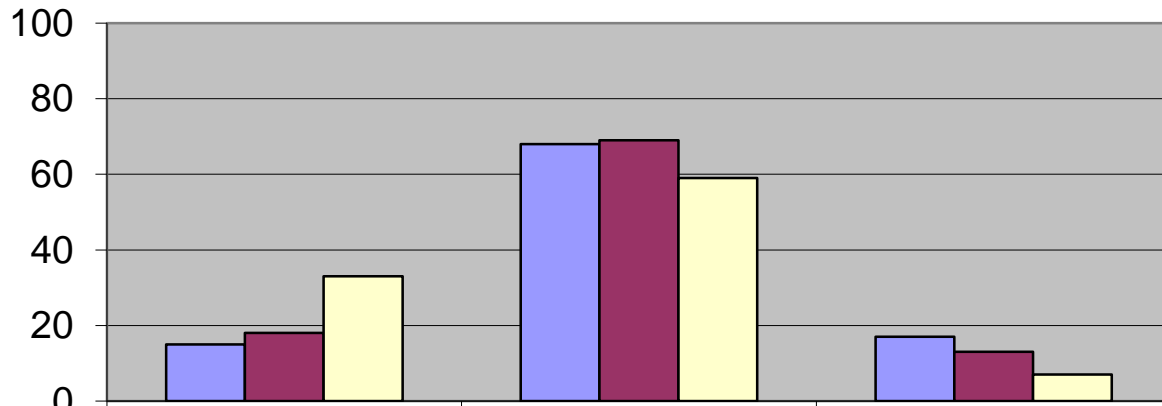


	% Partially Proficient	% Proficient	% Advanced Proficient
Holmdel	10	43	47
DFG I	10	48	42
State	23	50	28

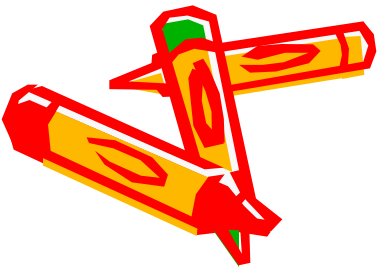


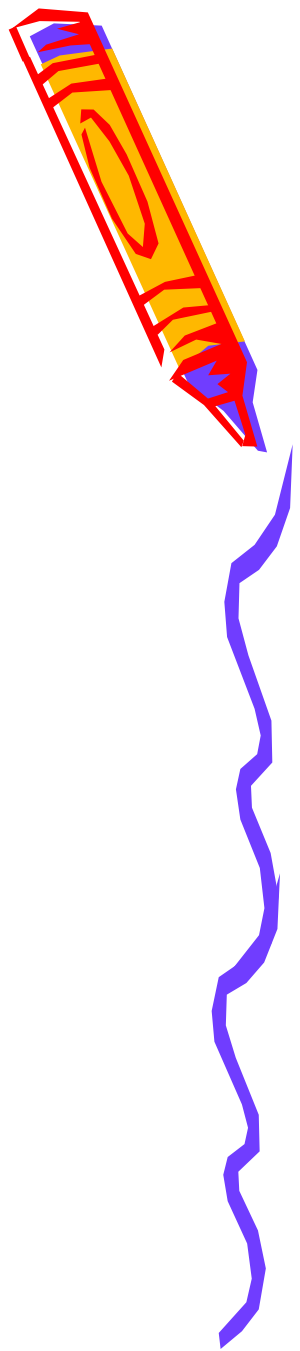


## Language Arts Grade 6

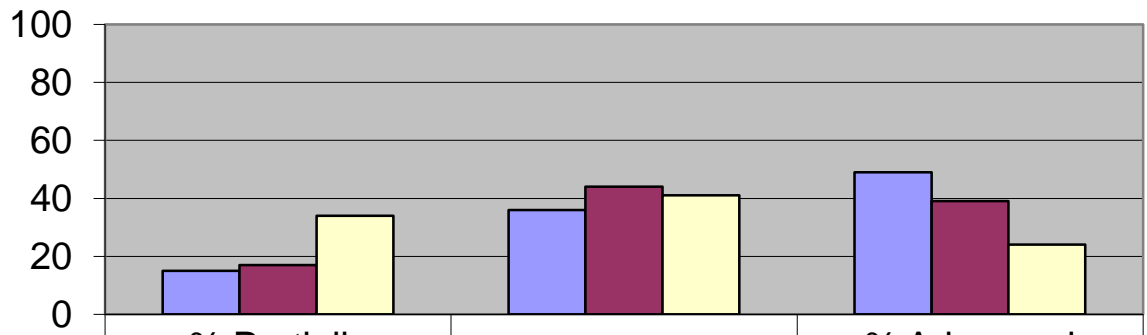


	% Partially Proficient	% Proficient	% Advanced Proficient
Holmdel	15	68	17
DFG I	18	69	13
State	33	59	7



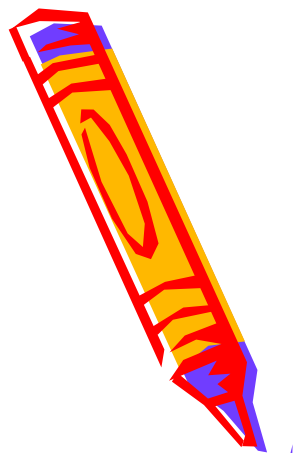


### Mathematics Grade 7

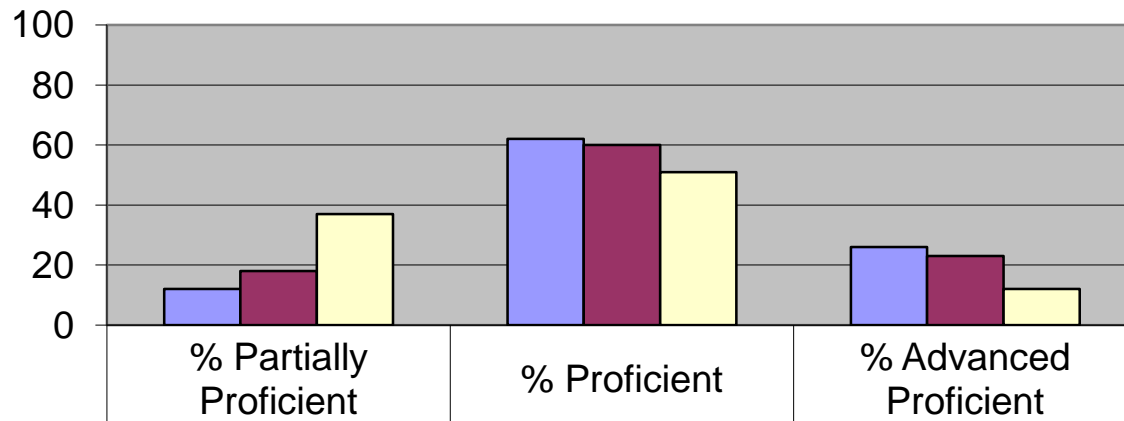


	% Partially Proficient	% Proficient	% Advanced Proficient
Holmdel	15	36	49
DFG I	17	44	39
State	34	41	24

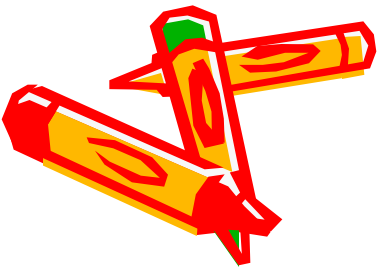


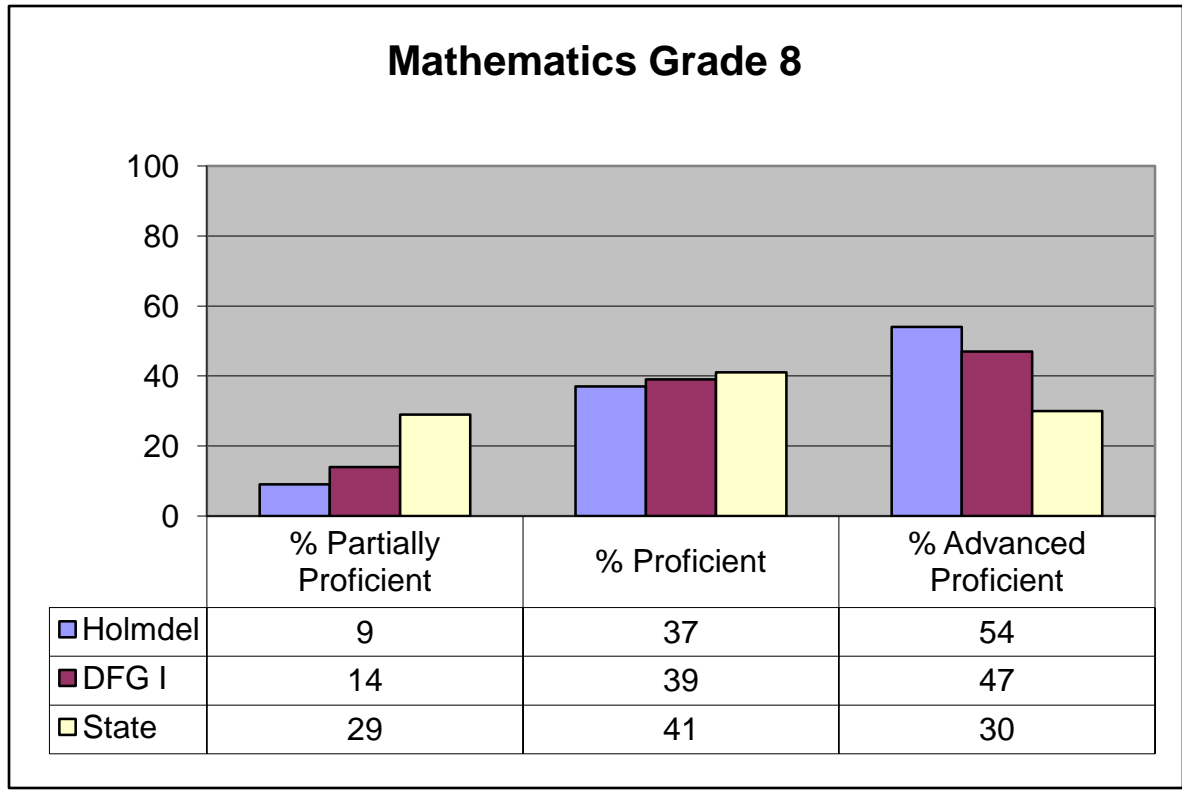
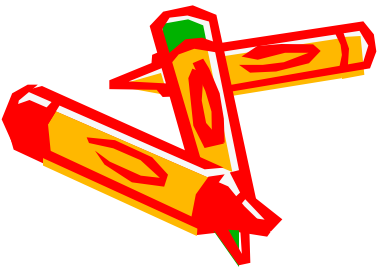
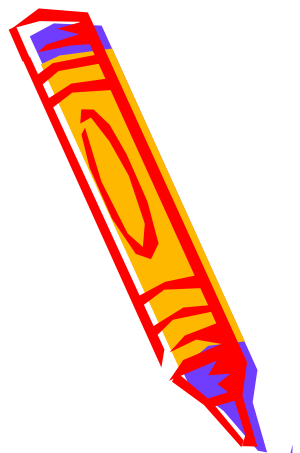


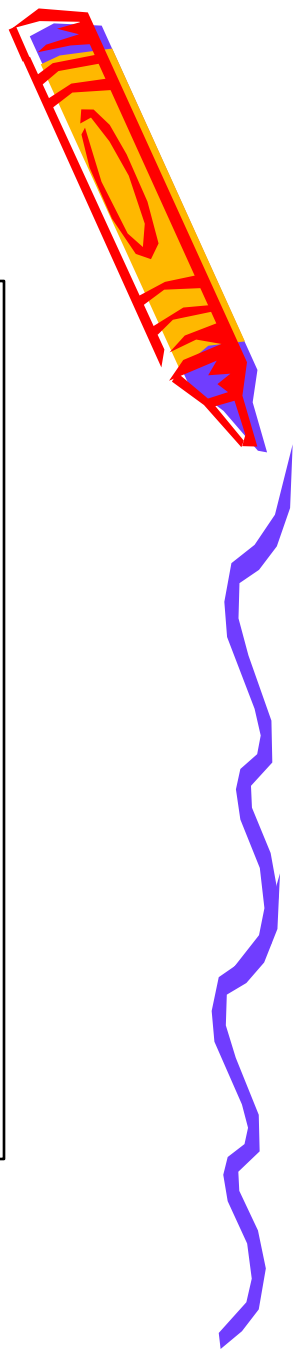
## Language Arts Grade 7



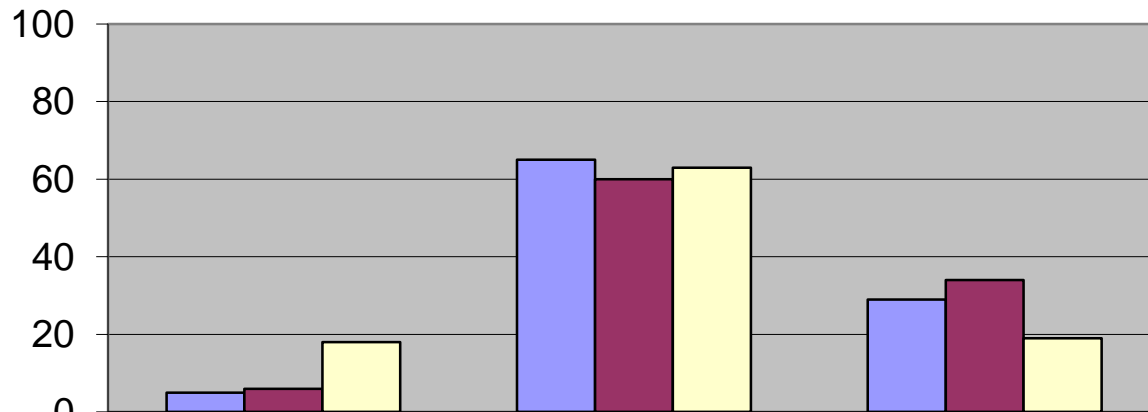
■ Holmdel	12	62	26
■ DFG I	18	60	23
■ State	37	51	12





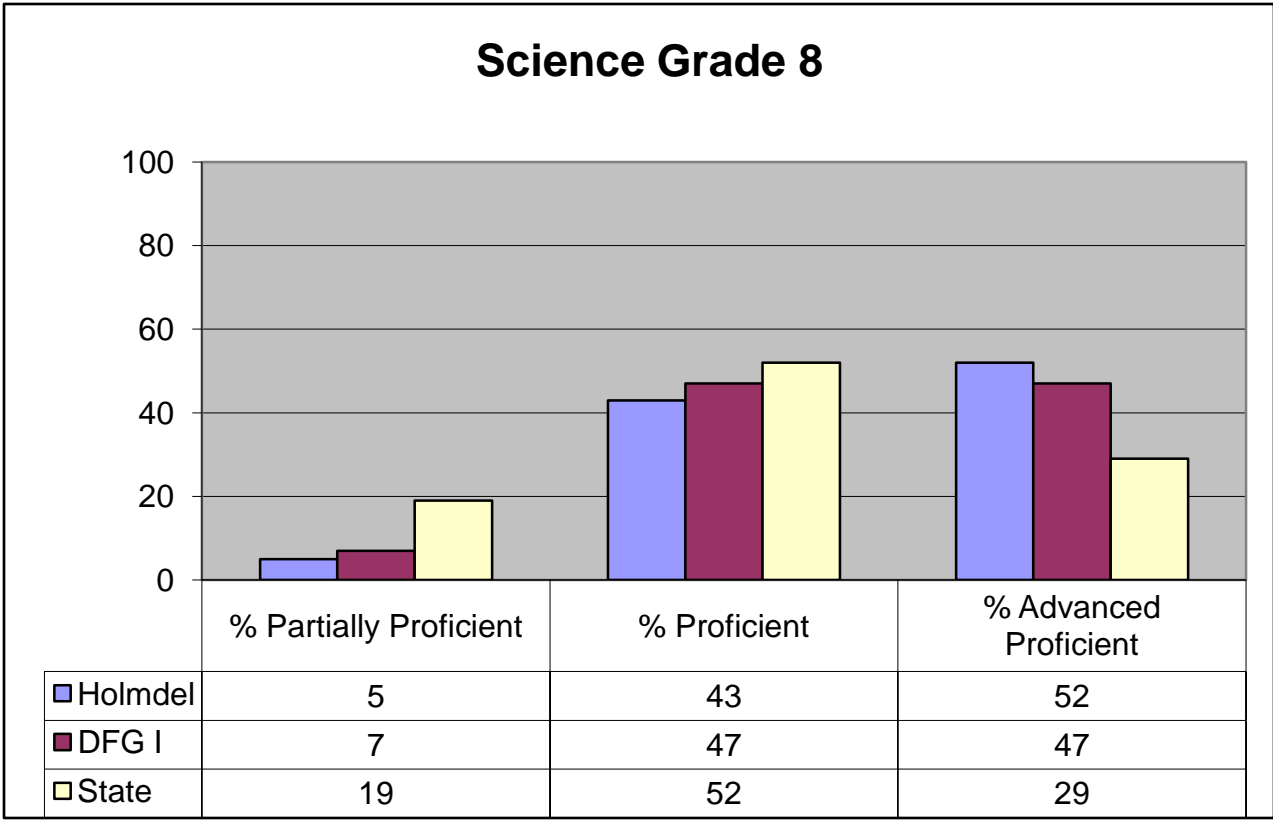
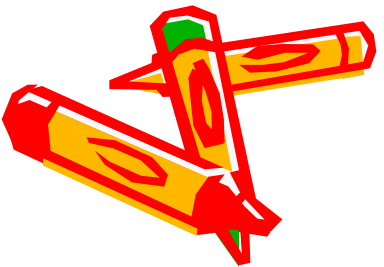
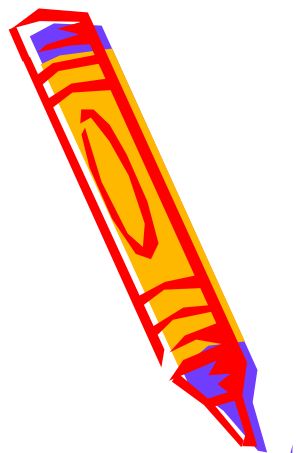


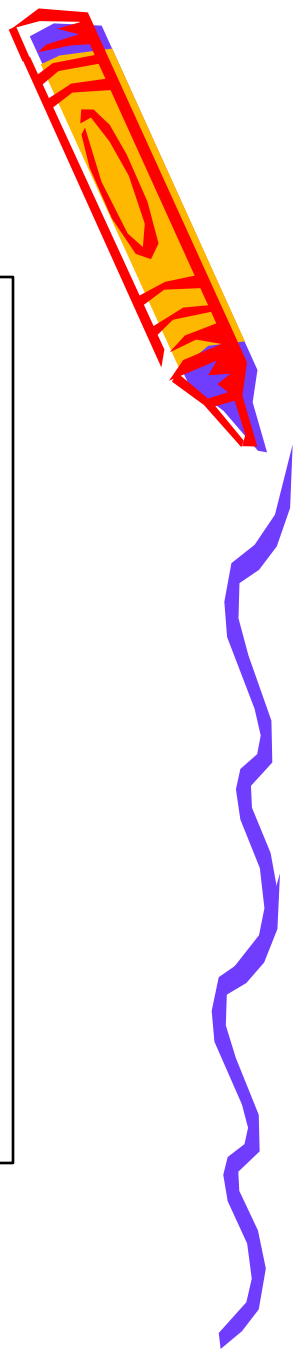
## Language Arts Grade 8



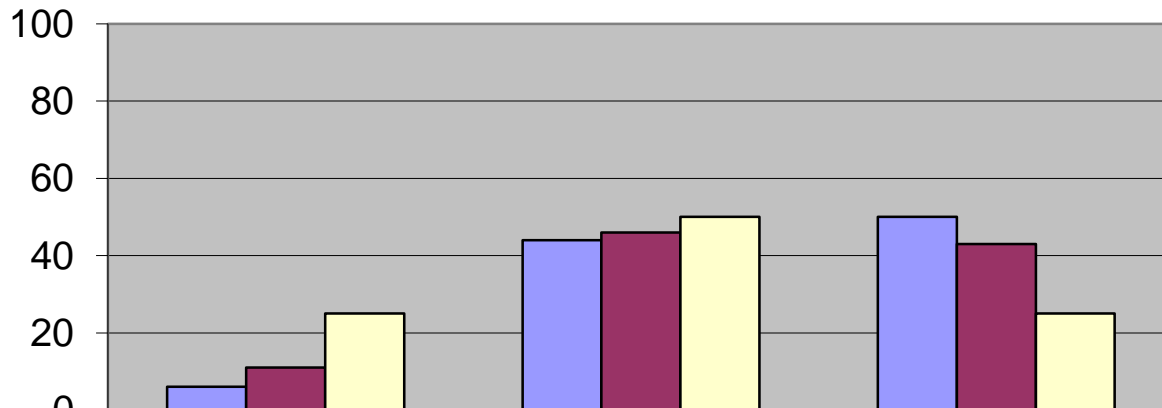
	% Partially Proficient	% Proficient	% Advanced Proficient
Holmdel	5	65	29
DFG I	6	60	34
State	18	63	19



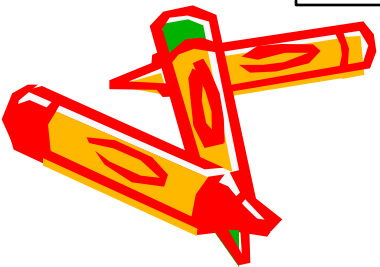




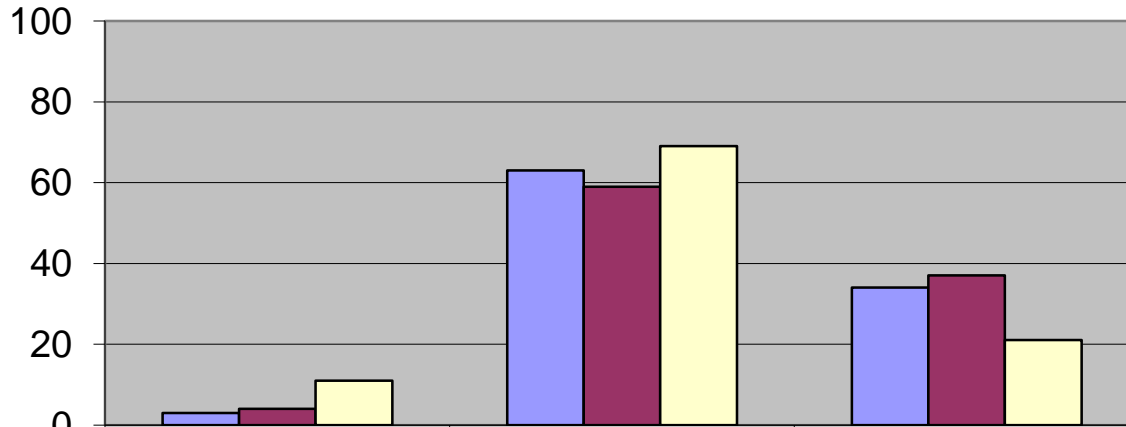
## Mathematics Grade 11



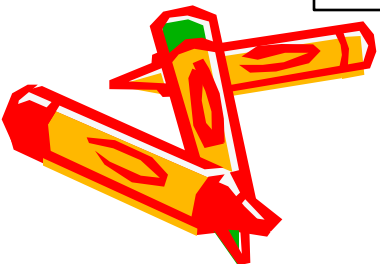
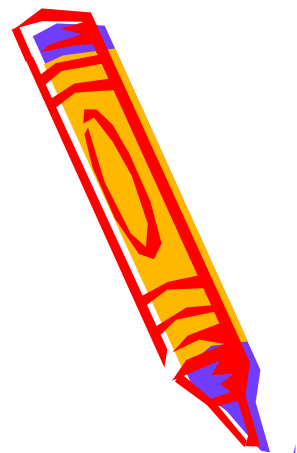
	% Partially Proficient	% Proficient	% Advanced Proficient
Holmdel	6	44	50
DFG I	11	46	43
State	25	50	25



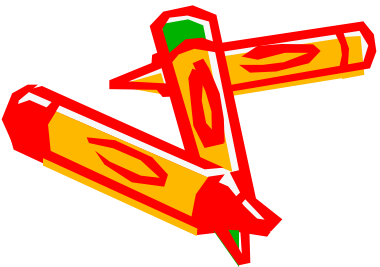
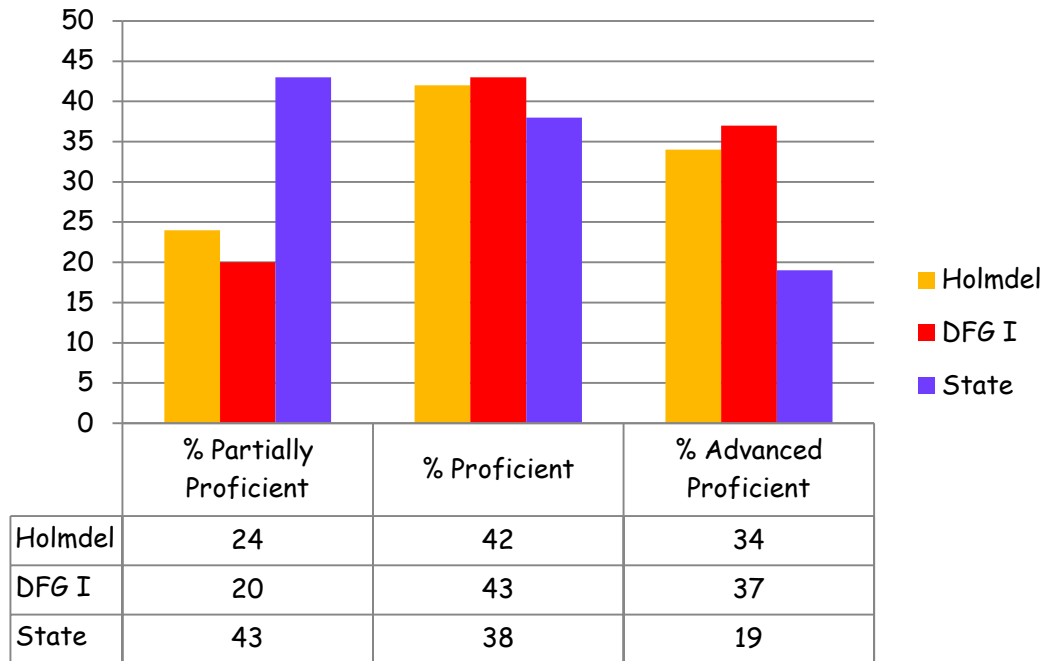
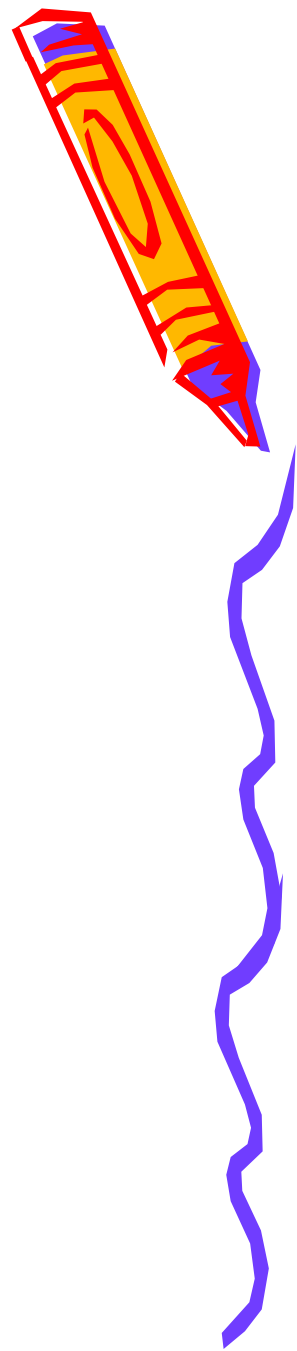
# Language Arts Grade 11



	% Partially Proficient	% Proficient	% Advanced Proficient
Holmdel	3	63	34
DFG I	4	59	37
State	11	69	21

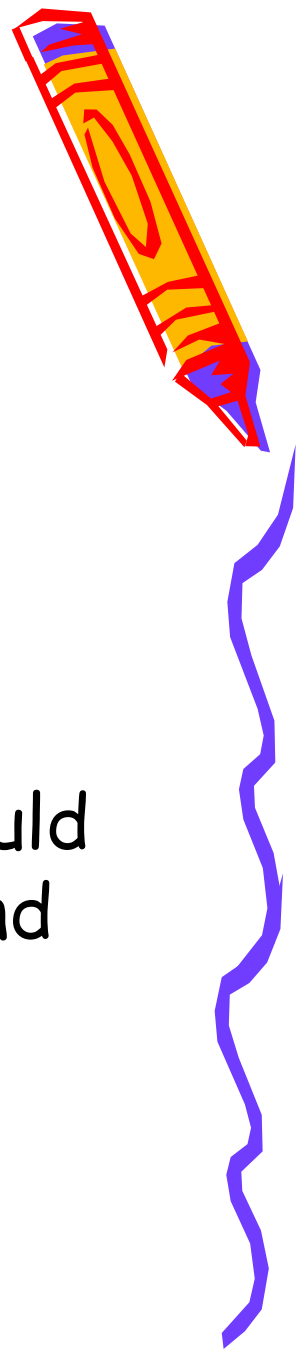


# Biology End of Course Exam

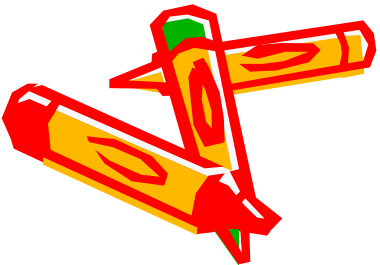


# Algebra

## End of Course Exam



- American Diploma Project (ADP)
  - A network of 15 states formed the ADP assessment consortium in 2005
- 1. To develop high quality exams that would ensure a consistent level of content and rigor within and across states in their Algebra courses



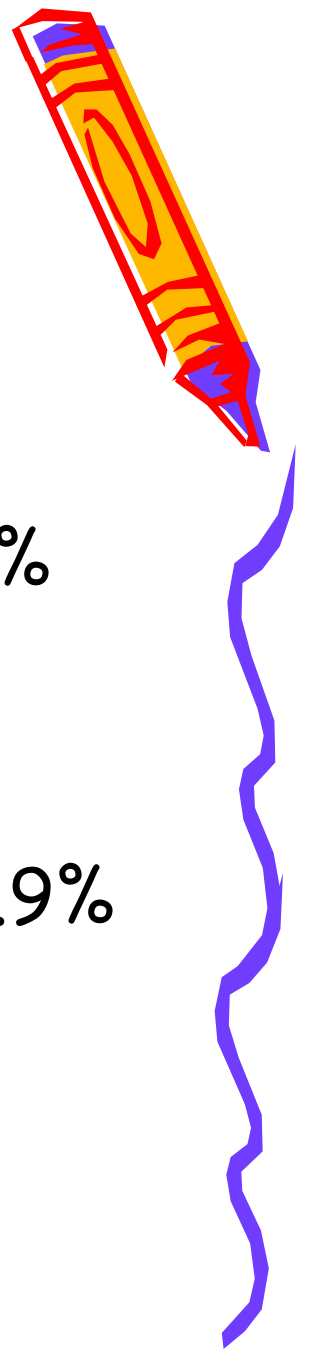
# ADP



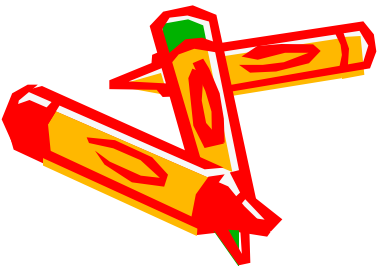
2. To improve the quality of curriculum and instruction in Algebra I and II courses, within and across states
3. To examine students' mastery of the content in the course they completed and to provide an indicator of students' readiness for success in mathematics at the next level



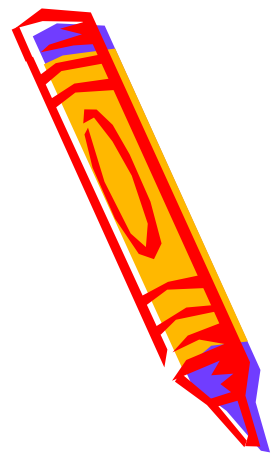
# ADP Algebra I 2011 Results



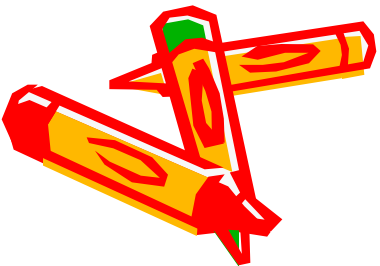
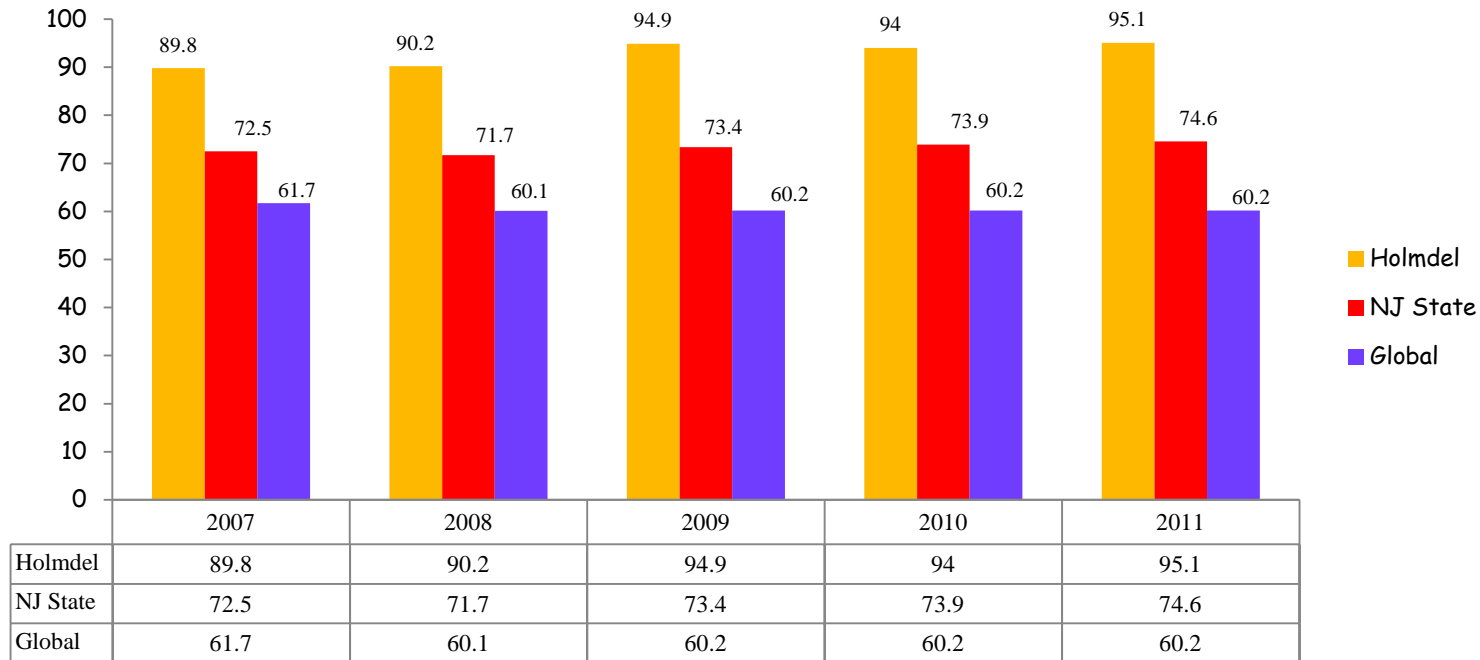
- Holmdel -
  - Students proficient or above 68%
- Consortium Students
  - Students proficient or above 28.9%



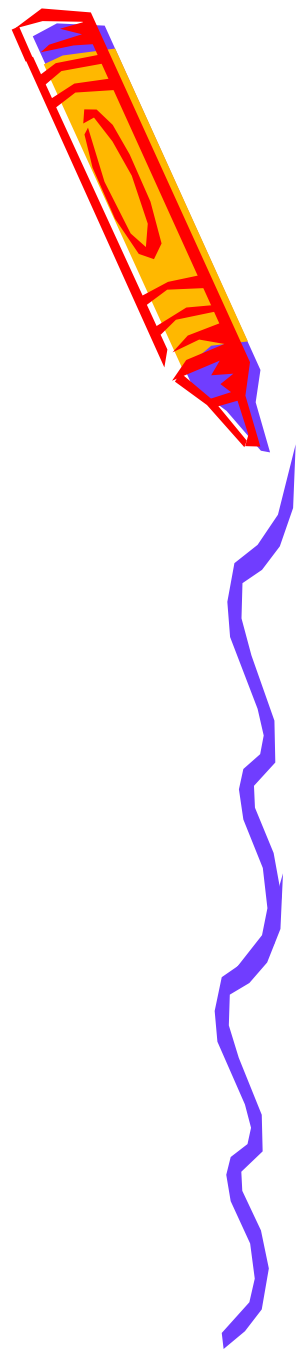
# Advanced Placement Exams



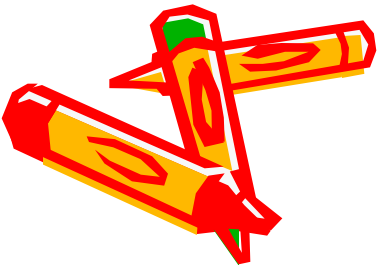
**% of Total AP Students with Scores 3+**



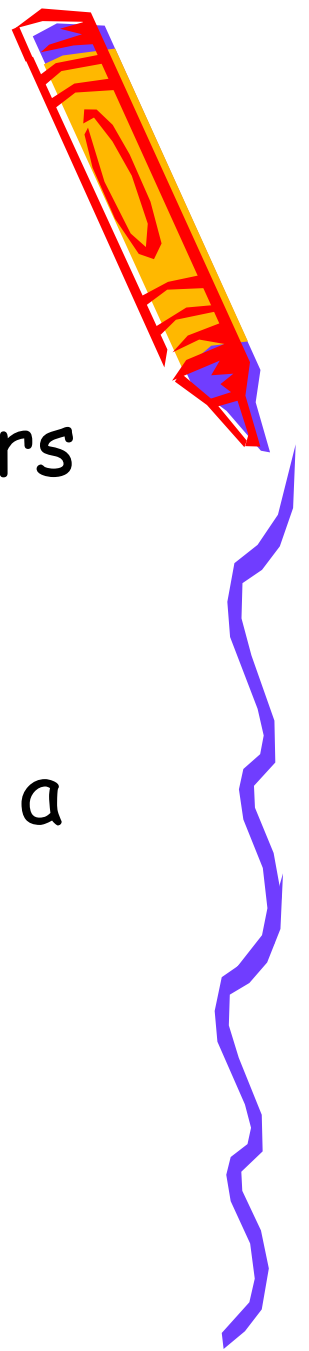
# SAT Scores 2011 Comparison



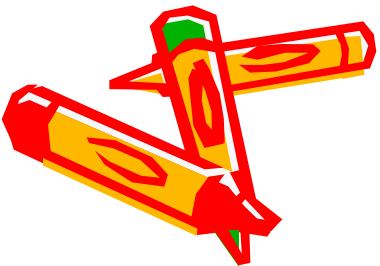
	<u>Math</u>	<u>Verbal</u>	<u>Essay</u>	<u>Total</u>
1. Holmdel (2011)	620	580	585	1788
2. New Jersey	516	495	497	1508
3. National	514	497	489	1500



# Adequate Yearly Progress



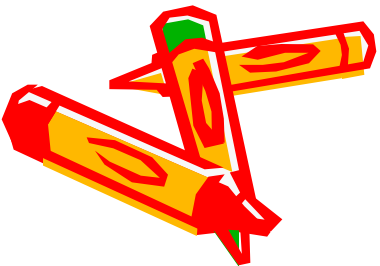
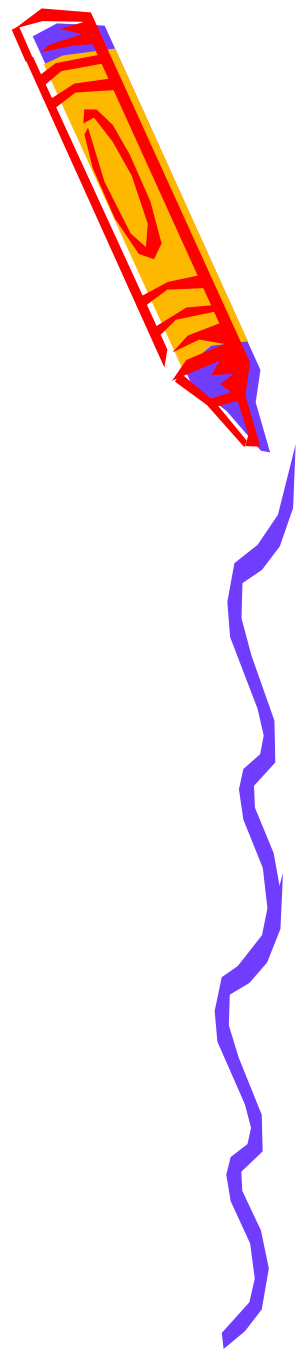
- A school must meet all 40 indicators
- If a school fails to meet one indicator, the school is considered a failing school



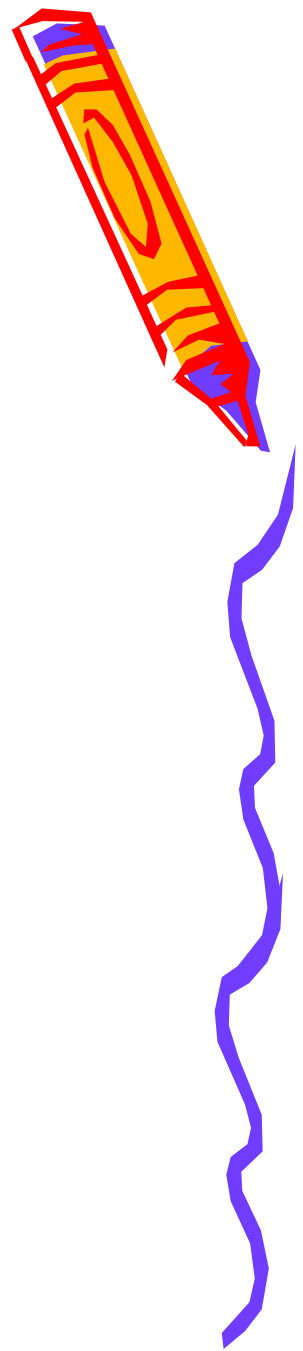
# State Targets changed in Spring 2011

- Language Arts

- |                |            |
|----------------|------------|
| - Grades 3 - 5 | 59% to 79% |
| - Grades 6 - 8 | 72% to 86% |
| - High School  | 85% to 92% |



# State Targets 2011

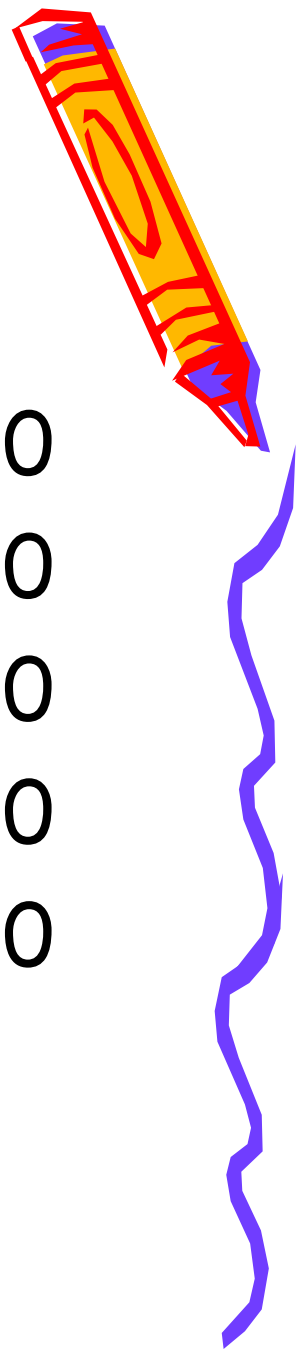


- Mathematics

- Grades 3 - 5                      66% to 83%
- Grades 6 - 8                      61% to 80%
- High School                      74% to 86%



# Holmdel Schools AYP Results



- Holmdel High School 40 of 40
- Satz Middle School (M) 39 of 40
- Indian Hill (grade 6) (LA) 39 of 40
- Indian Hill (LA) 39 of 40
- Village 40 of 40

